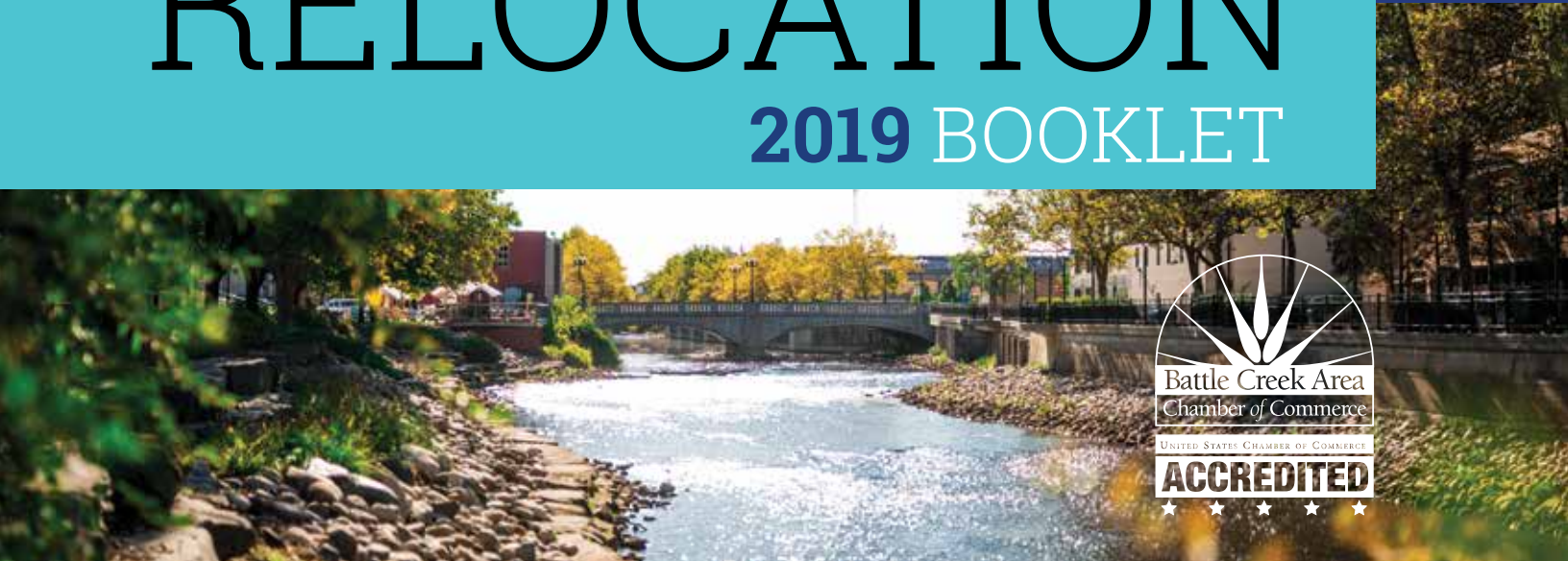




Battle Creek

RELOCATION

2019 BOOKLET





Community Loan and Grant Fund

Recognizing the need for access to capital in our community, the BCVision Small Business Action Team created the Community Loan and Grant Fund. The fund may provide Battle Creek area small business owners with access to capital, a loan or grant of up to \$10,000, when other sources may be unavailable.

Massage Green Spa is one of the first recipients of the Community Loan and Grant Fund. Make sure to visit this wonderful business in our community!



Providing everyone in the Battle Creek area the affordable luxury of massage on mornings, afternoons, & evenings, seven days a week.

5568 Beckley Road
Battle Creek, Michigan
(269) 719-8480

mgsbattlecreekmi@massagegreenspa.com
massagegreenspami.com

Visit www.battlecreekvision.com
for more information.



Dreaming Up the Ideal Retirement Is Your Job. Helping You Get There Is Ours.

To learn more about why Edward Jones makes sense for you, call or visit a financial advisor today.



Jacob Miller, CFP®
Financial Advisor

291 Columbia Ave E
Battle Creek, MI 49015-4408
269-962-0791

www.edwardjones.com
Member SIPC

Edward Jones®
MAKING SENSE OF INVESTING

IRT-1848D-A



TABLE OF CONTENTS

	Welcome Letter	7
	Arts & Culture	8-9
	Greater Battle Creek Area Demographics ...	10-11
	Important Phone Numbers	12
	Utilities	13
	Employment	15-16
	Nonprofits & Philanthropy	17
	Military	18
	Transportation	19
	City of Battle Creek Map	20-21
	Church Directory	22
	Real Estate & Housing	23-24
	Childcare & Preschool	26
	Education & Higher Education	28-30
	Banking & Finances	31
	Health & Fitness	32-33
	Parks & Recreation	34
	Entertainment	35



We are all
in this together.

Our team provides personalized service tailored to exceed your expectations, understand your values, and appreciate your aspirations.

Our team

Mark Yatros, CFP®, ChFC®, APMA®
Private Wealth Advisor
CERTIFIED FINANCIAL PLANNER™ practitioner
CA Insurance: #0E78947

Carissa Hagen, MBA
Director of Business Development

Sarah Herwick
Client Relationship Manager

We understand that planning for your financial future can be overwhelming. The financial planning process begins by understanding what is important to you. Together, we'll explore comprehensive strategies and develop a long-term plan customized to your needs with the following strategies:

- Life Planning
- Tax Planning
- Education Planning
- Saving for Retirement

allegiantws.com | 269.218.2100
927 West Columbia Avenue, Battle Creek, MI 49015
1624 West Centre Avenue, Portage, MI 49024

Securities and advisory services offered through Commonwealth Financial Network, Member FINRA/SIPC, a Registered Investment Adviser.



Kellogg is committed to creating 3 billion Better Days by 2025. We'll do so by fighting hunger and feeding potential for people around the world.



We're proud to call Battle Creek our global headquarters and work to create Better Days for our neighbors across the community. To learn more, visit www.breakfastsforbetterdays.com.

WELCOME LETTER



Welcome to the Greater Battle Creek Area located within Calhoun County, Michigan. Within this publication you'll find detailed information about the area showcasing how and why Battle Creek is a great place to start a career, raise a family, and retire. Those that call Battle Creek home find it to have affordable living, great communities, and safe neighborhoods. With 26 constituent neighborhoods, residents are able to occupy everything from historic homes to apartments, expansive downtown living (coming soon), and other diverse living options accommodating a variety of tastes and styles.

From nonprofits and other philanthropic opportunities, there's no shortage of ways you can give back or lack of a thriving sense of community. Battle Creek is known for its diverse community with a wealth of organizations dedicated to promoting diversity and understanding. The Southwestern Michigan Urban League has built a bridge between races and has sought to emphasize the greater reliance on the unique resources and strengths of the African-American community.

Encouraging healthy and outdoor living, Battle Creek is a recreational paradise. Whether you're looking to explore wildlife at Binder Park Zoo or experience nature surrounding the linear parks 26 miles of trails, Battle Creek's 7,000+ acres of parks and forests will keep you active and healthy. Additionally, the Fort Custer Recreational Area, located between Battle Creek and Kalamazoo, comprises of 3,033 acres of lakes, the Kalamazoo River, and trails. The City of Battle Creek also is home to Baily Park and Full Blast. Bailey Park is a multi-use park featuring three full-sized baseball stadiums (including C.O. Brown Stadium), two quadra-plex softball diamonds, four sand volleyball courts, playground area, and 12 shuffleboard courts. Full Blast features an internationally award winning Flash Flood water park offering 80,000 square feet of fun for the entire family.

Boasting a nationally recognized Math & Science Center and innovative educational and training programs, Battle Creek is home to four public and five private school systems as well as many specialty schools. We also offer an array of healthcare options ranging from large health systems to small hospitals and clinics that are sure to fit your needs.

We're happy to have you here and delighted to be the first to say, **WELCOME TO BATTLE CREEK!**

All my best!

Kara Beer

Kara E. Beer, IOM, MPA
President, Battle Creek Area Chamber of Commerce



One Riverwalk Centre
34 W. Jackson St., Suite 3A
Battle Creek, MI 49017
P 269.962.4076
F 269.962.6309
battlecreek.org





BATTLE CREEK

ARTS & CULTURE

Art enriches the lives of individuals and families living within the Greater Battle Creek Area by cultivating a sense of community and togetherness, inspiring the minds of our youngest generations, and supporting business growth and entrepreneurship.

ART ORGANIZATIONS & GALLERIES | Appreciate an exhibit and display of fine art, or be whisked away along with visitors from across the nation to a whimsical forest.

- Art Center of Battle Creek
- Kellogg Community College (see ad pg. 30)
Eleanor R. & Robert A. DeVries Gallery; Art on Campus Initiative
- Leila Arboretum Society – Battle Creek's Fantasy Forest

PERFORMING ARTS & VENUES | From world renowned musicians, community choruses and symphonies, local theatre productions, and international and national celebrities, the performing arts within our communities will keep your calendar booked month after month.

- Brass Band of Battle Creek
- Cereal City Concert Band
- FireKeepers Casino Hotel
- Kellogg Arena
- Kellogg Auditorium
- Kellogg Community College (see ad pg. 30)
Binda Performing Arts Center
- Music Center of South Central Michigan
- What A Do Theatre

COMMUNITY ART EVENTS | The Greater Battle Creek Area supports the arts through community festivals including Fall and Spring into the Arts, artwalks, Color the Creek, and music festivals. For a full list of featured festivals within Calhoun County, Michigan, visit battlecreekvisitors.org.

We value the importance of supporting our local artists and investing in ways to share our culture with current and future generations. We do this through art-driven community events, art organizations, museums, monuments, and culture centers or groups.



RELOCATION BOOKLET

CULTURAL ORGANIZATIONS & GROUPS | For our community to thrive, we must embrace our culture, history, and create an environment where everyone wants to live, work and play. Businesses and organizations leading the way to build a better community include:

- BC Vision (see ad Inside Front Cover)
- Burma Center
- City of Battle Creek
- Community Inclusive Recreation
- Nottawaseppi Huron Band of the Potawatomi
- Sojourner Truth Institute of Battle Creek
- Urban League of Battle Creek
- Voces
- Willard Library
- Woman's Co-Op

MUSEUMS & MONUMENTS | Explore history in the Greater Battle Creek Area ranging from local, national and international exhibits and artifacts on display throughout the community.

- Battle Creek Regional History Museum
- Calhoun County Visitors Bureau, Cereal City Exhibit (see ad Back Cover)
- Historic Adventist Village
- Kingman Museum (see ad pg. 34)
- Sojourner Truth Monument
- Underground Railroad Sculpture

COMMUNITY EVENTS & CALENDARS | Learn more about Battle Creek's art scene and culture by attending one of the numerous community festivals and/or events community organizers are hosting. Check out the following community websites and calendars to stay connected with upcoming things to do in and around the Greater Battle Creek Area:

- Battle Creek Area Chamber of Commerce
battlecreek.org; positivelybc.org
- Battle Creek Festivals
bcfestivals.com
- Calhoun County Visitors Bureau
battlecreekvisitors.org
- FireKeepers Casino Hotel
firekeeperscasino.com
- Kellogg Arena
battlecreeklive.com



World Renowned Brass Band of Battle Creek



battlecreek.org



GREATER BATTLE CREEK AREA DEMOGRAPHICS



Greater Battle Creek Area:
50,944

Population:



20 Years & Over:
37,145



Calhoun County:
134,128
(2017)

County Area Code:
269

Zip Codes:
49014, 49015, 49016, 49017, 49018, 49037

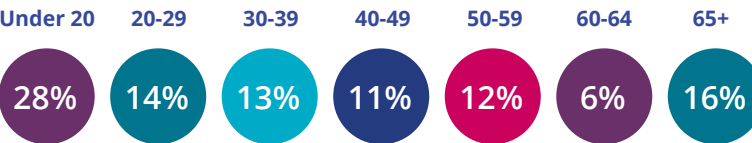
Land Area:

Calhoun County: 706.23 square miles Battle Creek: 42.61 square miles

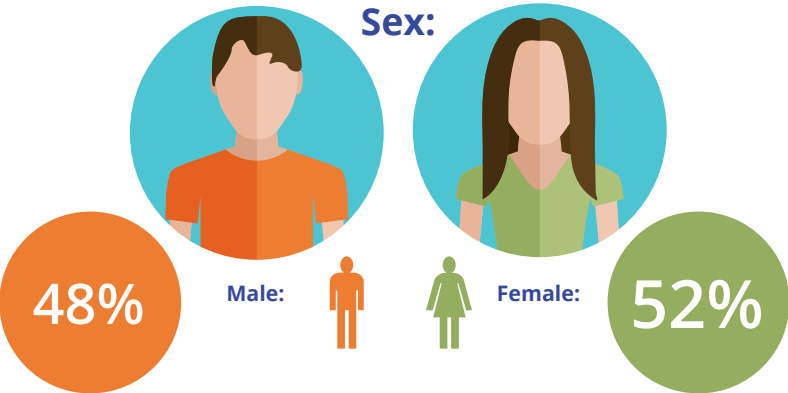
Coordinates:
42.3212° N, 85.1797° W

Median Age:
36

Age:



Sex:

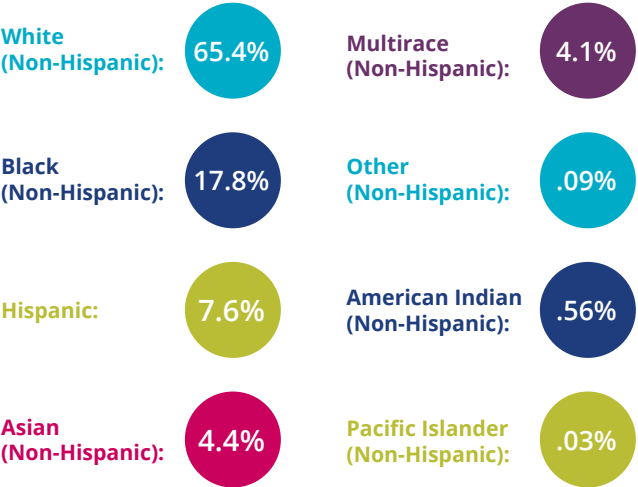


Veterans:
4,109

Sources: Veterans, 2013-2017
U.S. Census Bureau, American Community Survey (ACS) and Puerto Rico Community Survey (PRCS), 5-Year Estimates



Ethnicity Distribution:



Climate Average:

Rainfall (in.) Battle Creek, MI: 36 United States: 39.2	Avg. July High Battle Creek, MI: 82.5 United States: 86.1
Snowfall (in.) Battle Creek, MI: 56 United States: 25.8	Avg. January Low Battle Creek, MI: 16.5 United States: 22.6
Precipitation Days Battle Creek, MI: 70.8 United States: 102	Elevation (ft.) Battle Creek, MI: 878 United States: 1,443
Sunny Days Battle Creek, MI: 166 United States: 205	

Source: © Sperling's Best Places. All rights reserved. Updated: December, 2016

Sources: U.S. Census Bureau, Population Estimates Program (PEP), Updated annually. U.S. Census Bureau, data file from Geography Division based on the TIGER/Geographic Identification Code Scheme (TIGER/GICS) computer file. Land area updated every 10 years. Battle Creek Unlimited, Applied Geographical Solutions, 2018, provided by GIS Planning. JobsEQ®. Copyright © 2019 Chmura Economics & Analytics, All Rights Reserved.

GENERATIONS

Financial Planning & Wealth Management



Visit us at:
www.genfinplan.com

77 E. Michigan Ave,
Suite 140
Battle Creek,
MI 49017
Tel 269-441-4091

- Helping a select group of families achieve their life goals.
- Financial Planning
 - Investment Management
 - Rollovers
 - Experienced, contentious service

Registered Representative of and securities offered through Cambridge Investment Research, Inc., a Broker/Dealer, Member FINRA/SIPC. Investment Advisor Representative, Cambridge Investment Research Advisors, Inc., a Registered Investment Advisor. Cambridge and Generations Financial Planning & Wealth Management are separate companies and are not affiliated.

WORGESS

INSURANCE & FINANCIAL SERVICES

Let Worgess Do Your Worrying

Our mission is simple - we're here to protect our customer's assets.

We know that not every customer needs the same solution and as an independent agency, our long-standing relationships with major insurance carriers enable us to offer a wide variety of insurance solutions and asset management services that can be tailored specifically to your needs. So, no matter the time or day, you can let Worgess do your worrying.

Visit our website to quickly and easily receive your FREE quote.

Two West Michigan Ave.
Battle Creek, MI 49017
Ph: (269) 965-3221
Fx: (269) 965-8853

www.worgess.com

350 E. Michigan Ave.
Kalamazoo, MI 49007
Ph: (269) 488-3221
Fx: (269) 965-8853





IMPORTANT

PHONE NUMBERS

Police Department (Non-Emergency)	269.781.0911
Emergencies	911
Poison Control Center	800.222.1222
Bronson Battle Creek Emergency Department	269.245.5888
Lifecare Ambulance Service	269.964.6400
Secretary of State	888.767.6424
Social Security	877.445.0829
United States Postal Service – usps.com	
■ 90 McCamly St. S, Battle Creek, MI 49016	269.965.3286
■ 22115 Bedford Road, Bedford, MI 49020	269.965.8986
Willard Library	269.968.8166
HandsOn Battle Creek	211

City of Battle Creek – battlecreekmi.gov	
10 N. Division St., Battle Creek, MI, 49014	
• Manager, Mayor & City Commission Office	269.966.3378
• Water Division	269.966.3496
• Public Works	269.966.3343
• Sewer Division	269.966.3513
• Utilities	269.966.3366
• Animal Control	269.781.0911
• City Clerk	269.966.3348
• Income Tax	269.966.3345
• Streets & Park Maintenance	269.966.3507
• Battle Creek Transit	269.966.3474
■ Amtrak	800.872.7245
■ Greyhound	269.964.1768

Bedford Charter Township	
115 South Uldriks Drive, Battle Creek, MI, 49037	
• Main Phone	269.968.6917
• Ambulance & Fire Emergency	911
• Police Department	
■ Non-Emergency	269.966.3322
■ Emergencies	911

City of Springfield – springfieldmich.com	
601 Avenue A, Springfield, MI 49037	
• Main Phone	269.965.2354
• Public Safety (Fire/Law Enforcement)	
■ Non-Emergency	269.965.7795
■ Emergencies	911

Emmett Township – Emmett.org	
621 Cliff St., Battle Creek, MI 49014	
• Township General Office	269.968.0241
• Public Safety Department	
617 Cliff St., Battle Creek, MI 49014	
■ Business Office	269.968.9303
■ Central Dispatch Non-Emergency	269.781.0911

Pennfield Charter Township – pennfieldtpw.com	
20260 Capital Avenue NE, Battle Creek, MI 49017	
• Township Hall	269.968.8549
• Fire Department	269.968.1920
• Calhoun County Sheriff Information	269.781.0880
• Calhoun County Sheriff Non-Emergency	269.781.0911

Calhoun County – calhouncountymi.gov	269.781.0700
315 W. Green St., Marshall, MI 49068	
• County Administrator/Controller	269.781.0966
• Board of Commissioners	269.781.0966
• Calhoun County Sheriff's Office	269.969.6450
• Clerk & Register of Deeds	269.781.0730
• Treasurer	269.781.0807
• Senior Services	269.781.0846
• Battle Creek Veterans Affairs	269.969.6735
• Health Department (Battle Creek)	269.969.6370

Service Clubs

- For information on Service Clubs within the Greater Battle Creek Area, please contact the Battle Creek Area Chamber of Commerce at 269.962.4076.

Our mission starts
with the communities we serve.



At Waste Management, we're a proud community partner.

That's why we're honored to sponsor various community activities such as the Children's Water Festival, the Greater Battle Creek River Cleanup, International Summerfest, and the Battle Creek Field of Flight, along with many other Battle Creek organizations and events.

For more information, visit home.wm.com/Battle-Creek



© 2017 WM Intellectual Property Holdings, LLC.

THINK GREEN®



BATTLE CREEK

UTILITIES



Utilities

- Consumers Energy – consumersenergy.com
 - Emergencies 800.477.5050 or 911
 - General | Residential 800.477.5050
- SEMCO Energy – semcoenergygas.com
 - Emergencies 888.427.1427
 - Customer Service 800.624.2019
 - E-mail customer.service@semcoenergy.com

Trash Services

- Waste Management – home.wm.com/Battle-Creek (see ad pg. 12)
 - Customer Service 866.797.9018
- Republic Services – republicservices.com
 - Customer Service 888.249.5112
- Scooter's Refuse Service – scootersrefuse.com
 - Customer Service 269.962.2201

Electricity:
\$1,490



Fuel Oil &
Other Fuels:
\$140

Natural Gas:
\$415

Total Per
Household:
\$3,910



Other
Utilities:
\$529

Telephone
Service:
\$1,333



Source: Battle Creek Unlimited
Applied Geographic Solutions, 2018, provided by GIS Planning



34 W Jackson St Suite 3B
smallbusinessinfo@battlecreekmi.gov
269.966.3355 ext 1193



Biz Grid – Small Business Development

Whether you're a startup, or growing small business, Battle Creek has a wealth of resources. Use this online resource guide to be connected to agencies that can assist you.
www.bcbizinfo.com

Business Briefings – City of Battle Creek

A standing monthly meeting between business owners, developers, design professions, and City officials/inspectors to review proposed projects prior to formal submission.
www.battlecreekmi.gov/208/Inspections

Mapping Application – City of Battle Creek

Utilize this mobile friendly application to research property and view tax information, permits, and zoning code.
www.battlecreekmi.gov/196/Mapping-Applications

Master Plan – City of Battle Creek

The 2017 Master Plan guides development for Battle Creek and includes market analyses, future land use designations, and sub area plans.
www.battlecreekmi.gov/216/Master-Plan

MEDC Redevelopment Ready – State of Michigan

The City of Battle Creek is a Certified Redevelopment Ready Community as of March 2018. This program is voluntary and signals that locating a new business or growing an existing one within their municipality is straightforward and streamlined.
www.miplace.org/developers/

BC Cargo – Small Business Development

BC Cargo Pop Up Shop Marketplace was created in 2018 as a launch pad for entrepreneurs in Downtown Battle Creek. Merchants can apply to lease one of seven upcycled shipping containers for an entire season, or apply as a daily tent pop up vendor.
www.bccargo.org | Facebook: BC Cargo
Location: 35 W Hamblin

kiCH(ə)n – Small Business Development

The kiCH(ə)n is a new retail, food service incubator designed for early state or start up businesses. Two early stage businesses will co-locate within the space each year.
Location: 80 West Michigan

BATTLE CREEK UNLIMITED

Development done right!

The Fort Custer Industrial Park was designed to attract businesses to Battle Creek and that's exactly what's been happening. With a long list of incentives and opportunities, it might be exactly what your company needs to stay competitive and grow.

FORT CUSTER INDUSTRIAL PARK IN BATTLE CREEK, MICHIGAN

- Michigan's largest industrial park; third largest in the Midwest
- Strategically located along I-94 between Detroit and Chicago
- Home to 80+ companies, including 26 international companies
- 1,000+ acres available for development, all controlled by BCU
- True "shovel-ready" sites, with over \$8 million invested since 2017
- 200+ airside acres available at the W.K. Kellogg Airport
- Fort Custer Industrial Park and the W.K. Kellogg Airport are both in the local TIF district
- Aggressive workforce development efforts, including talent attraction
- Pro-business climate and generous local incentives
- Growth Sectors: Automotive/OEM Supply Chain, Aviation/Defense, Food/Beverage, Logistics/Services, and Energy Storage



Follow BCU online:



4950 West Dickman Road, Ste. 1 | Battle Creek, MI 49037 | 269.962.7526 | www.bcunlimited.org | info@bcunlimited.org



LOCAL FORCE GLOBAL IMPACT

For over 30 years, DENSO Manufacturing Michigan, Inc. has provided advanced automotive systems and components to the world's automakers. Join our team of over 168,000 employees worldwide, and help us craft the future of automotive manufacturing.

Learn more about DENSO at densocareers.com/battlecreek



BATTLE CREEK

EMPLOYMENT

Battle Creek, Michigan offers a variety of opportunities for employment with fast growth within the professional, scientific, and technical services sectors. Battle Creek is home to several key industries including aerospace and aviation, automotive and manufacturing, food and agriculture, IT and technology, as well as military and defense.

Labor Force Status:



The top 30 Employers account for 24,945 total employees

Top Ten include:

Employer	Employees	Employer	Employees	Employer	Employees	Employer	Employees	Employer	Employees	Employer	Employees
Denso Manufacturing Michigan, Inc. Automotive Parts	3,535	Kellogg Company Breakfast Foods	2,300	Firekeepers Casino Hotel Casino & Hotel	1,662	Veterans Administration Medical Center Medical Services	1,641	Hart-Doyle-Inouye Federal Center Government	1,500	Bronson Battle Creek Medical Services	1,298
										Battle Creek Public Schools Education (K-12)	1,089
										Meijer Inc. Retail	927
										Michigan Air National Guard Military	881
										Fort Custer Training Center Military	825

of International Companies:

26

Total # of Establishments:

2,584

Total # of Employees:

42,966

Total Establishments by Size:

1-4 Employees57.39%
5-9 Employees20.39%
10-19 Employees10.37%
20-49 Employees7.08%
50-99 Employees2.32%
100+ Employees2.44%

Taxes:

Corporate Income Tax: 6%
Personal Income Tax: 4.25%
State Sales Tax: 6%

Sources: Battle Creek Unlimited, Applied Geographical Solutions, 2018, provided by GIS Planning. JobsEQ®. Copyright © 2019 Chmura Economics & Analytics, All Rights Reserved.





BATTLE CREEK

EMPLOYMENT



The Greater Battle Creek Area's business-climate includes large, mid-size, and small business sectors. Within the large business sector resides Fort Custer Industrial Park with over 80 businesses including international companies from Japan, Germany, Austria, Canada and Denmark. Large businesses make up 2.44% of the total number of business establishments within our area. **The foundation of our business-climate is within our small business and entrepreneur sectors making up 78% of the total number of business establishments.**

In 2019 – 2020, the Battle Creek Area Chamber of Commerce is recognizing eight members celebrating 100 years of continuous membership. These members, their founding leaders, and history within our community are a good representation of our business-climate sectors:

- Bachman Hebble Funeral Service
- Kellogg Company
- Battle Creek Enquirer
- Post Consumer Brands
- Consumers Energy
- SEMCO Energy Gas Company
- Farley Estes Dowdle Funeral Home & Cremation Care
- Shouldice Industrial Manufacturers and Contractors, Inc.

We're excited and proud to honor our members celebrating 100 years of membership during our 107 years of serving the Greater Battle Creek Area. Over the past 100 years, these members have helped pave the way for businesses and entrepreneurs to thrive.

BUSINESS & ENTREPRENEURIAL

SUPPORT | With a rich history in business and entrepreneurship, the Greater Battle Creek Area is proud to nurture and support the needs of small, mid-size and large size businesses. Businesses and organizations available to help with resources, mentoring, and other needs include:

- Battle Creek Area Chamber of Commerce
- Battle Creek Unlimited
- Northern Initiatives
- SCORE
- Small Business Development Fund
- Willard Library

Sources: Battle Creek Unlimited, Applied Geographical Solutions, 2018, provided by GIS Planning, JobsEQ®, Copyright © 2019 Chmura Economics & Analytics, All Rights Reserved.

MICHIGAN WORKS! Southwest

200 W. Van Buren • Battle Creek, MI 49017
(269) 660-1412

Michigan Works! Southwest
prepares a qualified workforce to meet the current and emerging needs of business and industry

Visit us at miworkssw.org or at our Michigan Works! Southwest Service Center for opportunities to:

- Enhance work-readiness skills
- Earn employer-recognized skills
- Achieve successful outcomes
- Experience excellent customer service

A proud partner of the American Job Center network



BATTLE CREEK

NONPROFITS & PHILANTHROPY

RELOCATION BOOKLET



The fabric of our community lies around the vitality and spirit of our nonprofit organizations. Nonprofits affect the lives of all individuals within a community through volunteerism, advocacy, community support and employment. **Nonprofits within the Greater Battle Creek Area fall within the Housing, Education, Health, Basic Needs, Arts & Culture and Other sectors including one of the largest foundations within the United States, W.K. Kellogg Foundation.** Our communities are home to many unique nonprofits whose roots began in our own neighborhoods along with national nonprofits including The Arc, Big Brothers Big Sisters, Habitat for Humanity and United Way. A few of our nonprofits available to help with relocating into our area include:

- Battle Creek Community Foundation
- HandsOn Battle Creek
- Veterans Helping Veterans
- Battle Creek College Access Network
- United Way of Battle Creek & Kalamazoo Region
- Voces
- Battle Creek Housing Commission
- New Level Sports Ministries
- Woman's Co-Op
- Charitable Union
- Sprout
- Willard Library
- Community Inclusive Recreation
- Southwestern Michigan Urban League
- Food Bank of South Central Michigan

The Arc
of Calhoun County

Serving families and individuals with intellectual and developmental disabilities for over 64 years

Your Disability Experts

506 Riverside Drive Battle Creek, MI 49015
269-966-2575 thearccalhoun.org

Like us on Facebook
 Follow us on Instagram

 #25091

BATTLE CREEK MILITARY



Battle Creek is home to a rich and long standing military history of over 100 years. We are home to Fort Custer's training facilities that are used by the Michigan National Guard and other branches of the armed forces, primarily from Ohio, Illinois and Indiana. Many Reserve Officer Training Corps (ROTC) students from colleges in Michigan, Ohio, Illinois and Indiana also train at this facility, as well as the FBI, the Michigan State Police, various law enforcement agencies, and the Lansing Community College Truck Driver Training School.

Fort Custer is home to the 177th Regiment, Regional Training Institute, and the Regional Maintenance Training Site. In addition, the new August Armory is located within Fort Custer's boundaries. Fort Custer offers a state-of-the-art distance learning center, barracks, dining facilities for visiting units, and plenty of training areas. The small arms ranges were recently upgraded and the maneuver training areas offer a variety of terrain.

In 2017, the 110th Wing of the Air National Guard celebrated 70 years of calling Battle Creek home. Air National Guard members take pride in being active role models for their communities. During times of celebration or trouble, the Air National Guard provides resources and support needed to get the job done. We have helped with such projects as Habitat for Humanity and Red Cross blood drives. We have supported our communities with time, seat and supplies during hurricanes, tornadoes and earthquakes.



As an institution, the Air National Guard is committed to the vision of being a mirror of the people and values of America. We share in the success of our nation, and we are ready, willing and able to defend America's freedom. We take great pride in being, "Your Hometown Air Force," – the Air National Guard.

In addition to Fort Custer Training Center and the 110th Wing, Battle Creek is home to the Navy Operational Support Center, Marines, Hart-Dole-Inouye Federal Center, Battle Creek VA Medical Center, Fort Custer National Cemetery, American Legion Posts, VFW Posts, and Michigan Youth Academy. Dating to 1866, the Hart-Dole-Inouye Federal Center has also been known as the Western Health Reform Institute, the Battle Creek Sanitarium, the Percy Jones Army Hospital, and the Battle Creek Federal Center. Designed in the Italian Renaissance Revival style popular for early 20th Century academic buildings, the facility features J.J. Haidt murals, Ionic and Corinthian columns, Italian marble, and decorative moldings and ceilings. The center consist of 22 buildings on 24 acres, all of which were recently added to the National Register of Historic Places. The original Camp Custer was built on 130 parcels of land, mainly small farms leased to the Government by the local Chamber of Commerce which raised funds to pay the farmers their rent in advance, the organization acting as agent for the Government, but first going on record pledging itself to return to the Government any profit that might accrue from the transaction. After a two year grace period, the Army was allowed to buy the land for \$98 an acre.



BATTLE CREEK TRANSPORTATION

RELOCATION BOOKLET

When moving into a new area, it's important to understand the available means of transportation and how to navigate through the community whether you're running errands, commuting to work, or simply out and about sightseeing.

AIRPLANE | To travel by air, two airports are available to accommodate your travel needs. The **W.K. Kellogg Airport** within the City of Battle Creek includes base operations of private individuals, WMU's College of Aviation, the Air National Guard (110th Wing), Duncan Aviation, WACO Classic Aircraft, and Centennial Aircraft Services. The **Kalamazoo | Battle Creek International Airport** provides major connections world-wide through three major airlines including American Airlines, Delta and United.

BICYCLE | Looking for a healthier more environmentally friendly way to get in and around Battle Creek? Battle Creek Bcycle is a zero-hassle, zero emissions bike-sharing program. See the [Health and Fitness section on pg. 32](#) for Bcycle locations.

BUS | The Greater Battle Creek Area offers three options to travel by bus. **Battle Creek Transit** provides regular bus routes and services to area residents within the City of Battle Creek, and limited stops within the City of Springfield and Bedford, Emmett and Pennfield townships. **Tele-Transit** is a door-to-door service provided to area residents (primarily ADA Certified customers) within the City of Battle Creek, City of Springfield, and limited portions of Bedford, Emmett and Pennfield townships. **Greyhound** offers intercity bus services across the United States, Canada and Mexico.

AUTO | Along with bus accommodations, services are available by car or van helping you make scheduled doctors appointments, commute to work, and aid with other basic needs. **Aequitas Mobility Services** (see [ad pg. 19](#)), **A City Cab**, and **Lyft** are available along with **Community Action Agency** with services for seniors and disabled persons.

TRAIN | Travel by train to or from Battle Creek, Michigan with **Amtrak**. Amtrak strives to deliver high quality, safe, on-time passenger service that exceeds customer expectations.

HIGHWAYS & INTERSTATES | Traveling to, from and around the Greater Battle Creek Area is easier with several Interstate and Michigan Highways including **Interstate 194** (I-194), **Interstate 94** (I-94), **Interstate 69** (I-69), and **Michigan Highway 66** (M66).



18.5
BEST

Battle Creek

24.3

State of
Michigan

TRAVEL TIME TO
WORK (MINUTES)
WORKERS AGE
16 YEARS+

26.4

United States

Sources: United States: State of Michigan: U.S. Census Bureau, Commuting (Journey to Work), 2013-2017 American Community Survey 5-Year Estimates. Battle Creek: U.S. Census Bureau, Battle Creek City, Michigan QuickFacts, 2013-2017 American Community Survey 5-Year Estimates



Getting you where you need to be,
when you need to be there – 24/7.

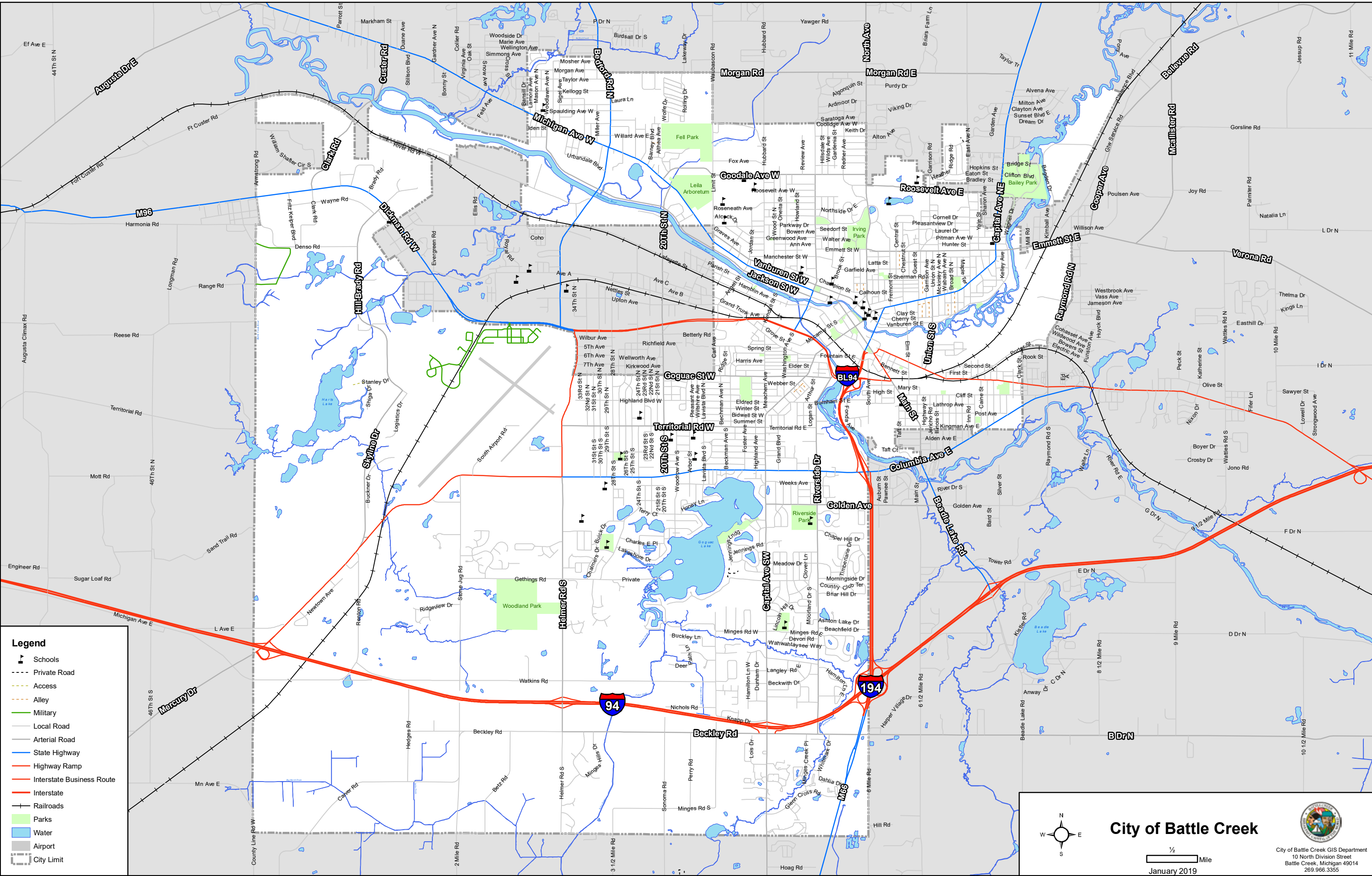
Whether you're headed into work or attending an evening event with friends, Aequitas on-demand transportation services will take you there. Schedule rides to and from locations within the Greater Battle Creek area—up to 7 days in advance.

AEQUITAS
MOBILITY SERVICES
Stronger communities through better mobility solutions

www.rideams.com | 269.441.5387

battlecreek.org

19



Legend

- Schools
- Private Road
- Access
- Alley
- Military
- Local Road
- Arterial Road
- State Highway
- Highway Ramp
- Interstate Business Route
- Interstate
- Railroads
- Parks
- Water
- Airport
- City Limit

City of Battle Creek

City of Battle Creek GIS Department
10 North Division Street
Battle Creek, Michigan 49014
269.966.3355

January 2019



BATTLE CREEK

CHURCH DIRECTORY

ANDRUS STREET CHURCH OF GOD
269.963.4294
Sunday Celebration: 10:45 a.m.

ASSEMBLY OF CHRISTIANS
Call for more information:
517.755.8814 or 517.204.1143
Sunday Bible Hour
(and Sunday School): Noon

ATHENS INDIAN CHURCH
Morning Worship: 11 a.m.
Sunday Evening
Worship: 6 p.m.
Wed. Prayer Meeting: 6 p.m.

BATTLE CREEK BAPTIST TEMPLE
269.962.9099
Sunday School: 10 a.m.
Sunday Morning Service: 11 a.m.
Sunday Evening Service: 6 p.m.
Wednesday Bible Study: 7 p.m.

BATTLE CREEK BIBLE CHURCH
269.589.6618
Sunday School for Adults
& Children: 9:30
Sunday Worship: 10:45

BATTLE CREEK CHIN BAPTIST CHURCH
269.282.0047 Office
Sunday Worship
Service: 11 a.m.
Church School
(Sunday): 11 a.m.
Youth Fellowship Program:
Saturday (7 p.m.);
Women Fellowship Program:
Sunday (6 p.m.)

BATTLE CREEK COMMUNITY CHURCH
269.753.9671
Sunday Services: 9 a.m.

BATTLE CREEK FRIENDS CHURCH
269.968.9376
Summer Sunday Schedule:
9:30 a.m. & 11 a.m.

BC SEVENTH-DAY ADVENTIST TABERNACLE
968.8101
Saturday: 9:30 a.m. Sabbath
School (all ages) followed by
Worship Service at 10:40 a.m.,
Tuesday Bible Seminar: 7 p.m.

BEDFORD BIBLE CHURCH
269.964.3238
Sunday Services: 11
a.m. & 1 p.m.
Sunday School: 9:45 a.m.
Wednesday Youth Clubs for
K4 & Up: 7 p.m.

BEREAN SEVENTH-DAY ADVENTIST CHURCH
Church: 965.2017
Sabbath School: 9:30 a.m.
Sat. A.M. Worship: 11 a.m.
Wed. Prayer Service: 7 p.m.

CENTRAL CHRISTIAN CHURCH
963.9348
Sunday Bible School for all
ages: 9:15 a.m. Worship &
Praise Celebration: 10:30 a.m.
Worship Service: 6 p.m.

CHURCH OF CHRIST
963.8920
Sunday School: 10 - 11 a.m.
Worship Service: 11 a.m.

CHURCH OF CHRIST
Church Office 269.963.1082
Sunday School & Bible
Study: 9:30 a.m.
Sunday Worship Service:
10:30 a.m., 5 p.m.
Wednesday Adult/Children
Bible Study: 7 p.m.

COMMUNITY MISSIONARY BAPTIST CHURCH
269.589.6456
Sunday School: 9:30 a.m.
Sunday Worship: 11 a.m.
Bible Study Wednesday: 7 p.m.

COMMUNITY OF CHRIST
269.344.0685
Sunday School: 9:45 a.m.
Sunday Worship: 11 a.m.

CORNERSTONE COMMUNITY CHURCH
269.979.5478
Sunday Worship: 11 a.m.
Sunday School: 9:45 a.m.

COVENANT HOPE CHURCH
269.962.1817
Sunday Morning
Worship: 10 a.m.

CULVER ROAD CHURCH OF GOD (7TH DAY)
269.721.8501 or 269.969.7368
Praise in Song Saturday
Morning: 10 a.m. Sabbath
School 10:30 a.m.
followed by Worship Service:
11:15 a.m. Wednesday
Night Fellowship: 7 p.m.

DEXTER LAKE CHURCH
269.968.8026
Sunday Morning
Worship: 10 a.m.

EAST LEROY COMMUNITY CHURCH
Sunday School: 9:30 a.m.
Sunday Service: 10:30 a.m.
Bible Study Tues.: 11 a.m.
Fellowship Dinner 1st
Wednesday: 6 p.m.

FAITH BAPTIST CHURCH
965.3187
Sunday School: 9:30 a.m.
Sunday Worship: 11 a.m.
Wednesday Prayer Meeting,
Discipleship Univ.,
and Bible Skills
(children): 6:30 p.m.

FAITH BIBLE CHURCH
729.5833
Sunday School: 10 a.m.
Worship: 11 a.m.

FAMILY ALTAR CHAPEL
Phone 965.0488
Sunday School: 10 a.m.
Morning Worship: 11 a.m.
Sunday Evening: 6 p.m.
Wednesday: 6:30 p.m.,
Family Night for all ages

FIRST BAPTIST CHURCH
269.962.6214
Sunday Worship
Service: 11 a.m.

FIRST CHRISTIAN CHURCH
269.964.7192
Sunday Worship/Children
Time: 10:30 a.m.
Breakfast 2nd Sat.: 8:30 a.m.
CWF Breakfast 3rd
Sat.: 8:30 a.m.

FIRST CHURCH OF CHRIST, SCIENTIST
Sunday Service: 10 a.m.
Sunday School: 10 a.m.

FIRST CONGREGATIONAL
269.965.1225
Sundays: 10 a.m. (Traditional)
11:45 a.m. (Koinonia)

FIRST PRESBYTERIAN CHURCH
269.964.3700
Sunday Worship: 10 a.m.

FIRST UNITED METHODIST CHURCH
269.963.5567
Sunday Worship: 9
a.m. Praise Service
Traditional Worship: 11 a.m.

FORT CUSTER CHRISTIAN ASSEMBLY
269.224.3050
Sunday Worship: 10:30 a.m.
Wednesday Nights: 4 p.m.

GRACE FELLOWSHIP BAPTIST CHURCH
Service times:
Sunday School –
Sundays: 9:30 a.m.
Worship Service –
Sundays: 11 a.m.
Wednesday Evening
Service: 6 p.m.
Thursday Prayer at Noon

HARPER CREEK BAPTIST CHURCH
269.979.4330
Sunday School: 9 a.m.
Fellowship Time: 10 a.m.
Morning Worship: 10:30 a.m.
Wednesday Bible Study/
Prayer Meeting 7 p.m.

HOPE CHURCH OF THE NAZARENE
964.4136
Sunday School: 11 a.m.
Morning Service: 9:30 a.m.
Wednesday Family Night Adult
Bible/Teen/Youth: 7 p.m.

LAKEVIEW BAPTIST CHURCH AMERICAN BAPTIST/USA
269.963.4979
Worship Service & Kid's
Church: 10:30 a.m.

LEVEL PARK BAPTIST CHURCH
269.968.6945
Sunday School:
9:30 - 10:30 a.m.
Fellowship: 10:30 - 11:00 a.m.
Worship: 11:00 a.m.
Awana, Wednesday
6:30 - 8 p.m.

LEVEL PARK BAPTIST CHURCH - CONT.
Adult Prayer/Bible
Study, Wednesday:
6:30 - 8 p.m.

LIFE IN CHRIST MINISTRIES
269.962.8658
Sunday Morning
Worship: 10:30 a.m.
Sunday Evening Prayer
Service: 5 p.m.
Sunday Evening Youth
Service: 6 p.m.

MACEDONIA MISSIONARY BAPTIST CHURCH
964.0015
Sunday School: 9:30 a.m.
Morning Worship
Service: 11 a.m.
Prayer Service Wednesday:
11:30 a.m. & 6:00 p.m.
Bible Study, Wednesday: Noon
& 6:30 p.m. Clothing Ministry:
Tues., Thurs., Sat.
10 a.m. – 1 p.m.

MAPLE UNITED METHODIST CHURCH
269.964.1252
Sunday Worship
Service: 11 a.m.

MARANATHA ORIGINAL CHURCH OF GOD
269.968.3878
Sunday School: 9:30 a.m.
Sunday Worship
Service: 11:30 a.m.
Intercessory Prayer
Tues.: Noon
Bible Study Wednesday: 7p.m.

MOUNT ZION A.M.E. CHURCH
269.962.8907
Worship Services
Bible Study Wednesday:
Noon & 6:30 p.m.
Sunday School: 9:15 a.m.
Morning Worship: 10:45 a.m.

NEW DELIVERANCE MISSIONARY CHURCH
269.966.9730
Sunday Service: 11 a.m.
Sunday School: 9:30 a.m.
Wednesday Bible Study: 7 p.m.

NEW HOPE C.O.G.I.C. HOME OF GREATER WORKS MINISTRIES
269.962.2505
Sundays Spiritual
Education: 9:30 a.m.
Sundays Morning
Worship: 10:30 a.m.
Wednesday Hour of
Power: 6 p.m.
Wednesday Evening
Bible Study: 6:30 p.m.

NEWTON UNITED METHODIST CHURCH
269.979.2779
Sunday Morning
Worship: 9 a.m.

NORTH AVENUE CHURCH OF GOD
965.1908
Sunday: Sunday
School: 9:30 a.m.

NORTH AVENUE CHURCH OF GOD - CONT.
Morning Worship:
9:30 & 11:00 a.m.
Kidzone: 11:00 a.m.
Wednesday: Midweek
Ministries: 6 p.m.

REDEMPTION LUTHERAN CHURCH
269.964.2321
Sunday School/Adult
Bible Study: 9 a.m.
Worship Service: 10:30 a.m.

THE SALVATION ARMY
963-3640
Sunday School: 9:45 a.m.
Morning Worship: 11 a.m.
Wednesday Youth
Programming: 4 - 7 p.m.
Thursday Bible
Study: 9:30 a.m.
Women's Ministries:
10:30 a.m.
3rd Thursday of every Month -
Hood Church Life
Recovery Ministries:
6:45 p.m.

SECOND MISSIONARY BAPTIST CHURCH
963.4640
Morning Worship: 11 a.m.
Sunday School: 9:30 a.m.
Prayer Service/Bible Study
Wednesday: 7 p.m.

SOUTH SIDE BIBLE CHURCH
979.1061
Sunday School: 9:30 a.m.
Sunday Morning Worship
Service: 10:45 a.m. Sunday
Evening Service: 6:00 p.m.
Monday Awana (ages 3 thru
6th grade): 6 p.m. Wednesday
Prayer Service: 6:30 p.m.
Jr. & Sr. High Youth Meeting: 6 p.m.

ST. JEROME CATHOLIC CHURCH
Parish Office: 269.968.2218
Weekday Masses:
Monday, Friday: 9 a.m.
Sunday: 10 a.m.

ST. JOHN'S EV. LUTHERAN CHURCH (WELS)
269.986.2059
New Year's Eve Service: 7 p.m.
Sunday Bible Study: 9:30 a.m.
Sunday School: 10:30 a.m.
Traditional Sunday
Worship: 10:30 a.m.

ST. JOSEPH CATHOLIC CHURCH
269.962.0165
Masses: Sat. (Sun
Obligation): 5pm
Sunday: 8 a.m., 10 a.m.,
Noon, 5 p.m. (Spanish)
Reconciliation Saturday:
3:30-4:30 p.m.

ST. MARK LUTHERAN CHURCH
269.964.0401
Worship Services on Sundays:
Blended Worship: 9:30 a.m.
Fellowship Time: 10:30 a.m.
Contemporary
Worship: 11 a.m.

ST. PAUL LUTHERAN CHURCH
968.3055
Est. 1916, Historical,
Traditional,
Liturgical Services,
Sundays: 10:30 a.m.
(Bible Study & Sunday
School: 9 a.m.)
Wednesdays: 7 p.m.

ST. PHILIP CATHOLIC CHURCH
968.6645
Masses Weekdays:
Monday, Wednesday-
Saturday: 8 a.m.
Tuesday: 12:10 p.m.
Sunday Obligation:
Saturday 4:30 p.m.
Sunday 7, 9, & 11:30 a.m.
Sacrament of
reconciliation: every
day before Mass
except the 7 a.m.
Saturday 3-4 p.m.

ST. PETER LUTHERAN CHURCH
269.963.4170
Sunday Worship: 9:30 a.m.

ST. THOMAS EPISCOPAL CHURCH
269.965.2244
Sundays: Holy Eucharist,
8 a.m. & 10 a.m.
Christian Formation for
Youth and Adults
(Sept. - May): 9 a.m.
Nursery available: 10 a.m.
Service Friday: Noon Eucharist

TRINITY LUTHERAN CHURCH (ELCA)
963.5356
Sunday Worship: 10:30 a.m.

URBANDALE BAPTIST CHURCH
269.964.7826
Sunday School: 9:45 a.m.
Sunday Morning
Worship: 11 a.m.
Sunday Evening Service: 6 p.m.
Wednesday Bible study &
Prayer Meeting: 7 p.m.

URBANDALE SEVENTH-DAY ADVENTIST CHURCH
964.1960
Sabbath School: 9:25 a.m.
Worship Service: 10:45 a.m.
Prayer Meeting Tues. 7 p.m.

VICTORY LIFE CHURCH
269.968.0045
Sundays: 9:45 a.m.,
11:30 a.m., 1 p.m.

WESTLAKE PRESBYTERIAN CHURCH
964.0100
Adult Sunday School: 9:15 a.m.
Worship Service & Sunday
School: 10:30 a.m.

WEST LEROY BIBLE CHURCH
979-1964
Sunday School for all
ages: 9:30 a.m.
Praise & Worship, including
Childrens' Message
and Children's
Church: 10:30 a.m.



BATTLE CREEK

REAL ESTATE & HOUSING

RELOCATION BOOKLET

The City of Battle Creek is home to global employers, historic neighborhoods and cultural amenities, which make it an inviting community to call home. Respect for local history and modern forward thinking has resulted in a community that offers a wide selection of housing, business and neighborhood options to meet a variety of needs. This includes many **historic homes, downtown living, lakefront, suburban residential and rural country housing** stock as well as multiple small commercial pockets and regional business corridors.

REALTORS

- Battle Creek Area Association of Realtors
- Berkshire Hathaway Home Services
- The Leonard Group powered by EXP Realty
- Pearse Realty, Inc.
- Re/Max Perrett Associates
- Troxel Realty Company

AFFORDABLE HOUSING

- Battle Creek Housing Commission

Real Estate & Housing continued on pg. 24



Battle Creek Area
Habitat
for Humanity®

ReStore Phone:
(269) 441-1038
Office Phone:
(269) 966-2502

Spruce up your new space at
a fraction of retail prices

ReStore	Tuesday - Friday	Saturdays
Hours:	9 a.m. - 6 p.m.	10 a.m. - 2 p.m.



Affiliate Office:
286 Capital Ave. NE
Battle Creek, MI 49017



SHOP. DONATE. VOLUNTEER

595 North Ave.

Battle Creek, MI 49017



BATTLE CREEK REAL ESTATE & HOUSING



The Battle Creek community offers unique cultural, historic and recreational assets, including many devoted to Sojourner Truth and the Underground Railroad, the Historic Adventist Village, Leila Arboretum, Binder Park Zoo, the Linear Park Trail system, and the Battle Creek and Kalamazoo rivers. As the third largest city geographically in the State of Michigan, comprised of 44 square miles, Battle Creek offers a full range of accessible parks and open space, paved and natural trail systems, waterways and recreation activities. See the Parks & Recreation section on page 34 for more information. The wide array of housing stock options, neighborhood amenities and community activities are some key desirable attributes that make Battle Creek an attractive place to live, work and play.

APARTMENTS, TOWNHOMES & HOUSING

- Annex of Battle Creek
- Bailey Park Apartments & Townhomes
- Bent Tree
- Keystone Lake Apartments
- Minges Creek Village Apartments
- Rolling Hills Community
- Silver Star Apartments
- The Landings at the Preserve Apartments
- Willow Creek Apartments & Townhomes
- Edward Rose & Sons
- Lakeside Apartments
- Wyndtree Townhomes

DOWNTOWN LIVING

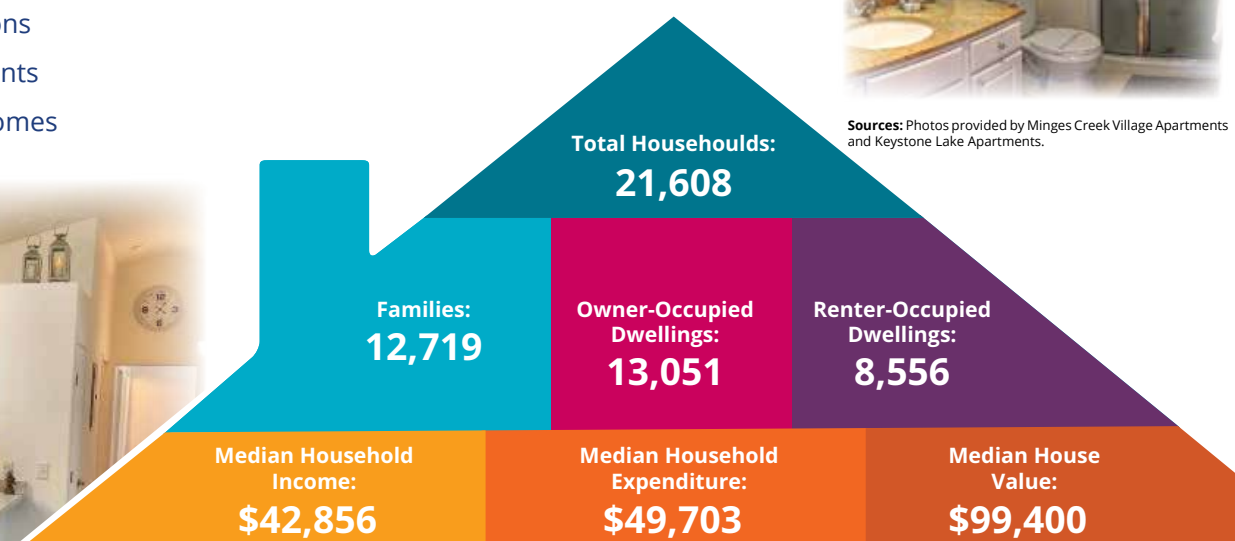
- Battle Creek Tower
- Heritage Tower – Coming Soon

SENIOR LIVING

- Advantage Living Center
- Evergreen Senior Care & Rehab
- Ganton Senior Communities
- Heartland Health Care Center
- The Village of Mill Creek
- NorthPointe Woods



Sources: Photos provided by Minges Creek Village Apartments and Keystone Lake Apartments.



Cost of Living:
75.9

In Battle Creek, the cost of living is cheaper than the average US city. Battle Creek's Cost of Living Index is 75.9 compared to surrounding areas that are 92. And, more than a third of Battle Creek households earn more than the national average each year. People can choose to live in the heart of downtown Battle Creek, or other surrounding communities and suburbs that make great use of our natural resources.

Sources: Battle Creek Unlimited, Applied Geographical Solutions, 2018, provided by GIS Planning, JobsEQ®. Copyright © 2019 Chmura Economics & Analytics, All Rights Reserved.

Welcome to Our Age Friendly Community



Helping seniors and frail adults with disabilities remain at home longer through in-home services and person-centered care.



CALL US
WE'RE HERE TO HELP!

REGION 3B AREA AGENCY ON AGING

CareWell
services **SOUTH WEST**

PROMOTING HEALTH • INDEPENDENCE • CHOICE

200 W Michigan Ave Suite 102, Battle Creek, MI 49017

CareWell Services SW serves seniors, persons with disabilities and their caregivers.

Since 1996, the Agency has been serving Barry and Calhoun counties through home and community based services to help older adults age with dignity in their own homes or the homes of their caregivers. The majority of those we serve are seniors aged 60 and over based on greatest social-economic need, including frailty, income, social or geographic isolation or other factors that increases the risk for vulnerability. While the majority of those we serve are low-income, our services are not limited to those individuals only.

Our Services Include:

- Information & Referral/Assistance
- Specialized services for persons with dementia
- Caregiver support, education and training
- Care management and in-home care
- Medicare/Medicaid Assistance Program (MMAP)
- Elder abuse prevention/education classes
- Senior nutrition/Senior Project Fresh
- Home safety support
- Health coaching and health & wellness programs

RESOURCE LINE:

1-800-626-6719

MAIN OFFICE LINE:

1-269-966-2450

ONLINE:

www.carewellservicesw.org



Are you ready for the next Industrial Revolution?

■ Using experience as a conduit to the future ■



MOTORSHOP
ELECTRICAL CONSTRUCTION CO.

**Battle Creek's Premier
Electrical Contractor Since 1949**

Providing complete electrical design, build, maintenance, and repair for commercial, industrial, governmental, and institutional installations.

TOGETHER, we are your Industry 4.0 solution provider for today's digital enterprise.   

40 Bartlett Street, Battle Creek, MI • 269-968-2241 • mselec.com • msintegratedautomationsolutions.com



**INTEGRATED
AUTOMATION SOLUTIONS**

**The Operational Technologies Division of
Motor Shop Electrical Construction Co.**

Providing the same service and support that Motor Shop Electrical is known for, while providing opportunities for an increased presence in the ever-changing world of factory floor automation, and pursuing the new and exciting aspects of today's integrated digital enterprise.



BATTLE CREEK

CHILDCARE & PRESCHOOL

With over 10 organizations and resources dedicated to the **health, safety and growth** of our youngest community members, the Greater Battle Creek Area is invested in the development and success of children.

JumpStart Childcare Center

269.963.4770

- Care provided for Infant - 13 years

Garden of Dreams Community Preschool and Childcare

Located inside of
First Congregational Church
269.788.0081

- Care provided for Infant - 5 years

Learning Zone

Preschool and Childcare

269.589.6423

- Care provided for Infant - 6+ years
- Great Start Readiness Program

The Wentworth House Childcare Center

269.968.4152

- Care provided for 2 ½ - 6 years

Young Child Associates

Stars and Stripes

269.963.5598

- Great Start (three year old scholarship)
- Allows 3 year olds to attend for free
- Great Start Readiness Program

Paws and Stripes

269.282.0847

- Great Start (three year old scholarship)
- Allows 3 year olds to attend for free
- Great Start Readiness Program

Battle Creek Christian Early Learning Center

269.963.1404

- Care provided for Infant - 5 years
- Great Start Readiness Program

Our World for Children

Located in St. Mark's
Lutheran Church
269.965.4051

- Care provided for Infant- 5 years

Lemon Tree Preschool

Located in Battle Creek YMCA
269.963.9622

- Preschool program for 3-4 years old

Kids Campus

269.969.6270

- Care provided for Infant- 5 years

Lakeview Child Development Center - FBR Charter Schools

269.963.1000

- Care provided for Infant - 5 years
- Great Start Readiness Program

Woodlawn Preschool

269.963.7334

- Preschool provided for ages 3-5 years
- Great Start Readiness Program



Head Start and GSRP

(Great Start Readiness Program) are two government-supported programs that provide free or low-cost preschool services for families, including eligible families in our local area.



**Success stories
are nurtured
for every student
in every grade
at every school.**

Battle Creek Public Schools are the heart of our community. With a choice of 14 quality schools, best-in-class advanced and accelerated programs, high academic and career-ready achievement, enhanced arts and athletics, and proactive community partnerships, BCPS is setting the standard for excellence.



facebook.com/bcpsbearcats

TO LEARN MORE OR ENROLL:

Call (269) 965-9482

battlecreekpublicschools.org/parents

Elementary Schools

Ann J. Kellogg (Grades 3 – 5)
Dudley STEM (Grades Pre-K – 2)
LaMora Park (Grades Pre-K – 2)
Post-Franklin (Grades Pre-K – 2)
Valley View (Grades Pre-K – 5)
Verona (Grades 3 – 5)
Elementary Magnet School - Coming Fall 2019

Middle Schools

Northwestern (Grades 6 – 8)
Springfield (Grades 6 – 8)
STEM Middle School - Coming Fall 2019

High Schools & Adult Education

Battle Creek Central High School (Grades 9 – 12)
Battle Creek Area Math and Science Center (Grades 9 – 12)
W.K. Kellogg Preparatory High School (Grades 9 – 12)
Battle Creek Adult Education

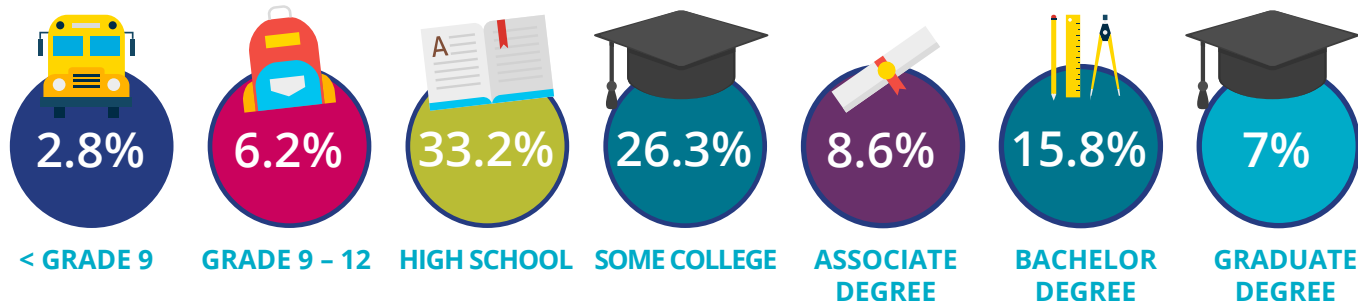




BATTLE CREEK EDUCATION

Education Attainment:
Percent High School Education or Higher: **90.5%**

Source: 2013-2017 American Community Survey 5-Year Estimates



Sources: Battle Creek Unlimited, Applied Geographical Solutions, 2018, provided by GIS Planning, JobsEQ®. Copyright © 2019 Chmura Economics & Analytics, All Rights Reserved.

Our communities within the **Greater Battle Creek Area BELIEVE in the education of our youth, adolescents, and adults** with the support of four school districts, three faith-based schools, public and virtual academies, non-traditional schools, one college, and two universities.



ARBOR
ACADEMY

ARBOR ACADEMY | Kindergarten thru 8 Grade. Arbor Academy is a FREE public school academy offering choice, challenge and success for every child. Visit oneamazingclass.org/arbor/ or call 269.963.5851 to learn more.



CALHOUN CHRISTIAN SCHOOL | Pre-Kindergarten thru 12 Grades. Calhoun Christian School provides academic excellence while upholding God's truth and challenging children to serve. Visit calhouncr.org or call 269.965.5560 to learn more.



Battle Creek Area Catholic Schools | Education for Living – Faith for Life. Students will know the Faith, share the Faith, and live the Faith. Visit bcacs.org or call 269.963.1131 to learn more.

- St. Joseph Catholic Pre-School
- St. Joseph Catholic Elementary School
- St. Joseph Catholic Middle School
- St. Philip Catholic Central High School



BATTLE CREEK PUBLIC SCHOOLS | Believe in the Change. We engage, empower, and collaborate to educate and prepare every Bearcat for college, career, and life as a global citizen. Visit battlecreekpublicschools.org or call 269.965.9500 to learn more. See ad pg. 27 for full list of Battle Creek Public Schools.



BATTLE CREEK MONTESSORI ACADEMY | Kindergarten thru 8 Grade. Battle Creek Montessori educates students through

Montessori methods and character development leading to intellectual curiosity and academic excellence, developing children who are self-reliant, peaceful, embrace diversity and contribute meaningfully to their community. Visit battlecreek-montessori.com or call 269.339.3308 to learn more.



CALHOUN COMMUNITY HIGH SCHOOL | Another Chance, A Better Choice. The mission of Calhoun Community High School is to provide a safe, healthy, supportive learning environment for students who have not found success in traditional high schools. At CCHS all students, with the support of staff, work to achieve their academic potentials and establish life goals, which include both employment and continued learning, as they become responsible citizens in a global community. New address coming fall of 2019, 765 Upton St., Springfield, MI 49037. Call 269.565.2460 to learn more. See ad pg. 29.



ENDEAVOR CHARTER ACADEMY

ENDEAVOR CHARTER ACADEMY | Young 5 thru 8 Grades. We believe children with a strong moral character and excellent college preparation will excel in any path they choose. We achieve this through our program built on the pillars of moral focus, academic excellence, personal responsibility and parental partnerships. Visit nhaschools.com/schools/endeavor-charter-academy/en or call 269.962.9300 to learn more.



HARPER CREEK COMMUNITY SCHOOLS | EDUCATE • EMPOWER • EQUIP Students for Life. Harper Creek Community Schools boasts a strong instructional foundation with a solid base of exceptional teachers, support personnel and staff who incorporate the best technology and trends in the classroom to achieve the highest academic outcomes. Visit harpercreek.net or call 269.441.6550 to learn more.

- Beadle Lake Elementary | Kindergarten thru 4 Grades
- Sonoma Elementary | Kindergarten thru 4 Grades
- Wattles Park Elementary | Kindergarten thru 4 Grades
- Harper Creek Middle School
- Harper Creek High School



LAKEVIEW SCHOOL DISTRICT | Serving over 3,700 students through the commitment of over 400 staff. The purpose of the Lakeview School District Board of Education is to represent the public's interest in providing equitable educational experiences in a safe learning environment that develop knowledgeable, healthy, responsible citizens who contribute and flourish in the global community. Visit lakeviewspartans.org or call 269.565.2400 to learn more.

- Minges Brook Elementary | Pre-Kindergarten thru 4 Grades
- Prairieview Elementary | Pre-Kindergarten thru 4 Grades
- Riverside Elementary | Kindergarten thru 4 Grades
- Westlake Elementary | Kindergarten thru 4 Grades
- Lakeview Middle School
- Lakeview High School



PENNFIELD SCHOOL DISTRICT | Learn Grow Lead. Pennfield School District, in partnership with the community, will ensure that all students will grow intellectually, socially and emotionally in a safe environment so they will become lifelong learners and contributing members of society. Visit pennfield.net or call 269.961.9781 to learn more.

- Dunlap Elementary | 3 thru 5 Grades
- North Penn Elementary | Kindergarten thru 2 Grades
- Purdy Elementary | Kindergarten thru 2 Grades
- Pennfield Middle School
- Pennfield High School



WEST MICHIGAN VIRTUAL ACADEMY | Non-Traditional Public School. We provide students with a flexible and innovative approach to obtain a high school diploma. We adapt to each students individual needs, allowing them to learn at any time, at any place, and at any pace. We are a school without walls that through dedication of students, and staff. Visit wmva.education or call 269.441.9463 to learn more.

Another Chance – A Better Choice
ACCEPTING STUDENTS IN GRADES 9-12



CALHOUN COMMUNITY HIGH SCHOOL



Have you lost credit in your current high school? Are you more successful in a small learning environment with lots of support and one-on-one attention? If so, maybe you should check out Calhoun Community High School. We run a safe and orderly school, offering the Michigan Merit Curriculum to students who want to earn their diplomas and move on to college or work.

CONTACT US FOR ENROLLMENT

269-565-2460 • www.calhounhs.org
15 ARBOR STREET, BATTLE CREEK, MI





BATTLE CREEK

HIGHER EDUCATION



KELLOGG COMMUNITY COLLEGE | Founded in 1956 by the Battle Creek Board of Education. In 1970, voters created an area-wide college district supported by local tax dollars. KCC,

which has sites in Battle Creek, Albion, Coldwater, Hastings, and in the Fort Custer Industrial Park, offers 59 pre-professional transfer curricula; 35 associate degree programs; 28 certificate programs; six categories of professional certifications; Visit Kellogg.edu or call 269.965.3931 to learn more.

KELLOGG COMMUNITY COLLEGE | Regional Manufacturing Technology Center (RMTTC). RMTTC is an innovative, community-driven training facility in the Fort Custer Industrial Park in Battle Creek, Michigan. The facility is home to KCC's Industrial Trades and Workforce Solutions. Visit Kellogg.edu or call 269.965.4137 to learn more.

KELLOGG COMMUNITY COLLEGE | High School Dual Enrollment. Completing college courses while you're in high school is a great way to earn credit and shorten the time it takes for you to complete a college degree. Visit Kellogg.edu or call 269.565.2042 to learn more.

KCC OFFERS:

- convenient locations
- online classes
- affordable tuition rates
- early college and dual enrollment opportunities
- accelerated credential programs
- university transfer options

and more!



IT'S ABOUT STAYING CLOSE TO
HOME

kellogg.edu



SIENA HEIGHTS
UNIVERSITY

SIENA HEIGHTS UNIVERSITY | Battle Creek Campus. Siena Heights University at Kellogg Community College has been providing educational programs to adult students in Battle Creek, Michigan, since 1992. The opportunities for programs include continued education programs, distance education programs, and bachelor's degree completion programs. Battle Creek also offers a blended Organizational Leadership master's degree program. Visit sienaheights.edu/Locations/Battle-Creek or call 269.965.3931 ext. 2950 to learn more.



WESTERN MICHIGAN UNIVERSITY | Kendall Center. WMU-Battle Creek provides high quality academic programs and services designed to meet the needs of area residents interested in personal and professional development. Courses are offered leading to bachelor's, master's and doctoral degrees, as well as graduate certificates. Classes are offered at convenient times, including evenings and weekends. Visit wmich.edu/battlecreek or call 269.387.6293 to learn more.



College of Aviation

WESTERN MICHIGAN UNIVERSITY | College of Aviation. The College of Aviation at Western Michigan University offers the only comprehensive aviation program at a public university in Michigan, and with just under 1,000 undergraduate students, is one of the largest aviation programs in the nation. Backed by 80 years of aviation experience and our excellent industry reputation, the college is a powerful force in the future of aviation training. Visit wmich.edu/aviation or call 269.964.6375 to learn more.



The **BATTLE CREEK COLLEGE ACCESS NETWORK (BC CAN)** | committed to providing relentless community leadership to connect students to college and career opportunities for a brighter future. Through community partnerships, programming, and events, we work to establish a college-going culture by nurturing and guiding students of all ages with support and resources to make education after high school a reality. By the year 2025, at least 60% of Americans will need a high-quality degree, certificate or credential to meet the growing need for talent in our local businesses and organizations. BC CAN wants everyone to believe that college is also a necessity; college is for everyone; college is a public good. 269.719.8228 | battlecreekcan.org



BATTLE CREEK

BANKING & FINANCES

RELOCATION BOOKLET

Our financial institutions are committed to **YOU** and serving our communities. With an array of products and services to fit your every need, we're confident that you'll be financially secure in no time. We have the best there is to offer when it comes to banks, credit unions and financial advisors.

BANKS | Commitment to our community, their customers, and personalized service seem to be shared values among the many banking institutions within the Greater Battle Creek Area. They offer competitive products and services while investing in both personal and business growth.

- 5/3 Bank
- Chase Bank
- Chemical Bank
- Comerica Bank
- Flagstar Bank
- Huntington Bank
- Old National Bank
- PNC Bank
- Southern Michigan Bank & Trust

CREDIT UNIONS | Commitment to our community, member ownership, and a full array of personal and business services are shared values among our credit unions within the Greater Battle Creek Area. They offer financial wellness, ease of use, convenient locations, and mobile and Co-Op Network access.

- Advia Credit Union
- American 1 Credit Union
- Blue Ox Credit Union
- Consumers Credit Union
- Consumers Professional Credit Union
- Grand Trunk Credit Union
- Kalsee Credit Union
- Kellogg Community Credit Union
- Honor Credit Union
- Marshall Community Credit Union
- OMNI Community Credit Union (see ad pg. 31)

FINANCIAL ADVISORS | Committed to achieving both your and your organization's short and long-term financial needs, Financial Advisors in the Greater Battle Creek Area are here to provide unbiased, personalized advice to help with your investment, educational, and retirement-income goals.

- Allegiant Wealth Strategies (see ad pg. 5)
- Ameriprise Financial Services
- Edward Jones Investments (see ad pg. 3)
- Generations Financial Planning & Wealth Management (see ad pg. 10)
- Janney Montgomery Scott LLC
- The Planning Group
- Raymond James
- Wells Fargo Advisors



MORE THAN A BANK.

- We're not-for-profit. We focus on people not profits.
- We're one of the few financial institutions in the country that share our profits by paying our members an annual Cashback Rebate.
- We're 100% local and committed to the betterment of our communities.
- We've been serving the residents of Southwest Michigan since 1951!

Join OMNI Community Credit Union!
Now with 12 convenient locations.



(866) OMNI-WOW
www.omnicommunitycu.org



battlecreek.org

31



BATTLE CREEK

HEALTH & FITNESS

COMMUNITY MENTAL HEALTH | Mental health affects how we handle and manage our day-to-day tasks and interactions with one another. It's important to find balance and also to utilize local services and resources available when needed. The following businesses and organizations may assist you with maintaining and improving your mental health needs:

- Bronson Battle Creek Psychiatry & Behavioral Health
- Comforts of Home Counseling & Care Management
- Family & Children Services
- Grace Health
- HelpNet
- Summit Pointe

NUTRITION & FOOD | Diet and nutrition play a key role in our everyday health and wellness. The Greater Battle Creek Area offers a variety of businesses focused on your nutritional health which include:

- Ambitions Health and Nutrition
- Battle Creek Area Farmers Market
- Energy Nook
- Epic Nutrition
- Horrocks Farm Market
- Sprout Grocery

GYM & FITNESS CENTERS | Beyond our nature trails, parks, Bcycles and our walkable communities, your fitness goals and physical health are top priorities for the many gyms and fitness centers within the Greater Battle Creek Area. With welcoming trainers, custom exercise and nutritional programs, and accommodating hours and facilities you'll be transforming yourself in no time.

- Battle Creek Family YMCA
- Blue Moon Fitness
- Cross Fit Battle Creek
- Minges Creek Athletic Club
- Planet Fitness
- Rock Solid Wellness Studio

SALON & SPAS | Relax, feel refreshed, and disconnect from your everyday tasks and daily responsibilities by scheduling a little bit of time for yourself at one of our luxury salon and spas:

- Massage Green Spa
- Minges Creek Salon & Spa
- R&R Tanning & Spa
- Salon Spa Academy

SENIOR SERVICES | It's important that older adults in our community have opportunities to maintain their independence, and that they're able to enhance their physical, emotional and social health. The following agencies are here to support older adults with everyday needs thru the services and resources provided to residents living in the Greater Battle Creek Area:

- CareWell Services Southwest
- Community Action Agency
- Senior Care Partners P.A.C.E



Old Lakeview Station
660 Capital Ave, S.W.
Battle Creek, MI 49015

Riverwalk Centre
34 W. Jackson St.
Battle Creek, MI 49017

Kool Family Community Center
200 W. Michigan Ave.
Battle Creek, MI 49017

Kellogg Community College
450 North Ave.
Battle Creek, MI 49017

Bcycle Now!

Get our Free Map App.
Now on the App store and Google Play



battlecreek.bcycle.com

RELOCATION BOOKLET



BRONSON BATTLE CREEK

269.245.8000 • 300 North Avenue, Battle Creek, MI 49017 • bronsonhealth.com



Bronson Battle Creek Hospital is a 218-bed, all-private room community hospital providing a full range of outpatient and inpatient services including emergency care, heart and vascular care, neurology and neurosurgery, obstetrics, orthopedics and sports medicine, general surgery, testing and diagnostics, and rehabilitation services. Specialty services include cancer care, inpatient behavioral health, sleep health, home health, and a wound-healing center with hyperbaric oxygen therapy. Bronson Battle Creek has been recognized by the Commission on Cancer of the American College of Surgeons as a Community Hospital Comprehensive Cancer program since 1995 and is the only hospital in Michigan to be a recipient of the Outstanding Achievement Award three review cycles in a row. In 2018, Bronson Battle Creek was awarded the national Energy Star label for a third year in a row for its environmental sustainability and energy conservation efforts, and it received an 'A' Hospital Safety Grade (Fall, 2018) from The Leapfrog Group, a national organization that measures healthcare quality and safety.

Choose a Bronson Doctor



Connected care is better care. That's why when you choose a Bronson doctor, you have online access to:

- Request appointments
- Send messages to your doctor's office
- Refill prescriptions and view current medications
- View test results
- Print immunization records
- Pay your bills
- Receive appointment and health check reminders

If you don't have a Bronson doctor, learn more at bronsonhealth.com/bronsonmychart.



BATTLE CREEK PARKS & RECREATION

With over 29 parks including 26 miles of hard-surface linear trails, the City of Battle Creek's Park and Recreation department is committed to their mission to "provide recreation programs and services that improve the physical health and wellbeing of the individual and the community." Battle Creek's parks also include Community Parks which are diverse in nature and serve a broader purpose focused on meeting community-based recreation, athletics, and open space needs. Community Parks range from 1 to 144 acres serving an audience within more than a three-mile radius. In addition to our parks, our community offers specialty facilities such as Binder Park Golf Course, Binder Park Zoo, Woodland Park Nature Preserve, Willard Beach Park on Goguac Lake, Full Blast Recreation Center, and Kellogg Arena.



- **Bailey Park**
1392 Capital Ave. NE
Battle Creek, MI 49017
- **Fell Park**
260 Willard Ave. East
Battle Creek, MI 39017
- **Festival Market Square**
25 McCamly St. South
Battle Creek, MI 49017
- **Fort Custer State Recreation Area**
5163 Fort Custer Drive
Augusta, MI 49012
- **Friendship Park**
10 State St. West
Battle Creek, MI 49017
- **Full Blast**
35 W. Hamblin Ave.
Battle Creek, MI 49017
269.966.3667
- **Historic Bridge Park**
14930 Wattles Road
Battle Creek, MI 49014
- **Irving Park**
311 North Ave.
Battle Creek, MI 49017
- **Leila Arboretum**
992 W. Michigan Ave.
Battle Creek, MI 49017
- **McCamly Park**
992 W. Michigan Ave.
Battle Creek, MI 49017
- **Mill Race Park**
11 Capital Ave. SW
Battle Creek, MI 49017
- **Monument Park**
110 E. Michigan Ave.
Battle Creek, MI 49017
- **OTT Biological Preserve**
Arlington Avenue
Battle Creek, MI 49014
- **The Rink Battle Creek**
75 Houston Ave.
Battle Creek, MI 49017
269.963.7465
- **Wave Square**
63 Michigan Ave. West
Battle Creek, MI 49017
- **Willard Beach**
50 George B Place
Battle Creek, MI 49015
- **Woodland Park**
14175 Helmer Road
Battle Creek, MI 49015

For park features and rental information, call 269.966.3431 or visit bcparks.org.



BATTLE CREEK ENTERTAINMENT

RELOCATION BOOKLET

The Greater Battle Creek Area is rich in entertainment with world-renowned music, historically significant sites and museums, nature trails and parks, tournament-style golf courses, a world-class casino, an award winning zoo, live theatre, mouth-watering food and restaurateurs, a multitude of sports, and year-round community festivals and art. No matter what you choose, we're sure your experience will be full of memorable good times. Our community also features tourism ambassadors who are committed to creating positive experiences with each and every visitor through the Calhoun County Visitors Bureau's Certified Tourism Ambassador program.

We encourage you to explore our amazing communities by watching the balloon launches during the **Field of Flight Air Show & Balloon Festival**, enjoying a night out at **FireKeepers Casino Hotel**, strolling through Wild Africa at **Binder Park Zoo**, taking part in a burger competition during **Backyard Burgers & Brewsfest**, or by enjoying live music, art and street vendors at **Kellogg Arena**, **Festival Market Square**, and **Fall and Spring into the Arts**, artwalks.

Looking for more information, visit the **Battle Creek Area Chamber of Commerce** (Suite 3A) and **Calhoun County Visitors Bureau's** Welcome Center (Suite 1A) in the Riverwalk Centre in downtown Battle Creek at 34 W. Jackson Street.



COMMUNITY CALENDARS:
battlecreekvisitors.org
positivelybc.org



KINGMAN MUSEUM

Hiding inside Battle Creek's pristine Leila Arboretum, sits the 80 year old historic landmark that is Kingman Museum.

Come join us and explore Michigan habitats, get an up close look at how the human body works, see exotic animals and insects of the world, investigate dinosaurs, navigate through outer space, and learn about our own planet: Earth!

CONTACT US!
kingmanmuseum.org
269.965.5117

FREE ADMISSION
to all members of the community!

Dinosaurs & Natural History
Science & Technology
Space
World Cultures

& MORE, including over 20 planetarium shows!

Celebrating 100 years as 1919 2019 Member-Owned Private Club

Visit www.battlecreekcc.com or call (269) 962-8734 to learn more about membership

BATTLE CREEK **Welcome Center** **& CEREAL HISTORY EXHIBIT**



INFO & MAPS



**CEREAL HISTORY
EXHIBIT**



SOUVENIRS



MICHIGAN



BATTLE CREEK



KELLOGG'S



Downtown Battle Creek

34 W. Jackson St. • Suite 1A
(800) 397-2240 • (269) 962-2240

www.BattleCreekVisitors.org